



# UniversalLine

**“Refined, Perfect solutions  
in Style and Ease of Use”**

- Multi-Purpose
- Strong, User-Friendly Structure
- Flexible Cabling Capacity
- Smart Cooling Options
- Extensive Design Options

**19" Free-Standing Cabinets, ideal for  
Infrastructural Cabling and Active Device Housing  
of Civil Engineering, Telecommunication and IT  
applications.**

## SIZE RANGE

26U to 47U Height  
600, 780mm Width  
600 to 1000mm Depth

## HIGHLIGHTS

### MULTI-PURPOSE

- Extensive Area of Usage
- 120 Degree Door Opening
  - Perforated or Solid Metal door options beside  
standard Safety Glass Front & Solid Metal  
Rear doors
- 4-Way Access:
  - Removable, Lockable Doors & Side Panels



## STRONG, USER-FRIENDLY STRUCTURE

**Casting Alloy Corner Parts providing;**

- Strong & Precise Frame Construction
- Easy disassembling for more flexibility.
- Flat-pack Option
- 600 KG Load Carrying Capacity
- 24-fold proved design for absolute rigidity

## SMART COOLING OPTIONS\*

- Optional Easy-Top Mounted Fan tray provides easy  
maintenance without removing the cabinet content
- Efficient passive ventilation thanks to the vented,  
Pagoda style Top Cover

\*Pls. see page 12

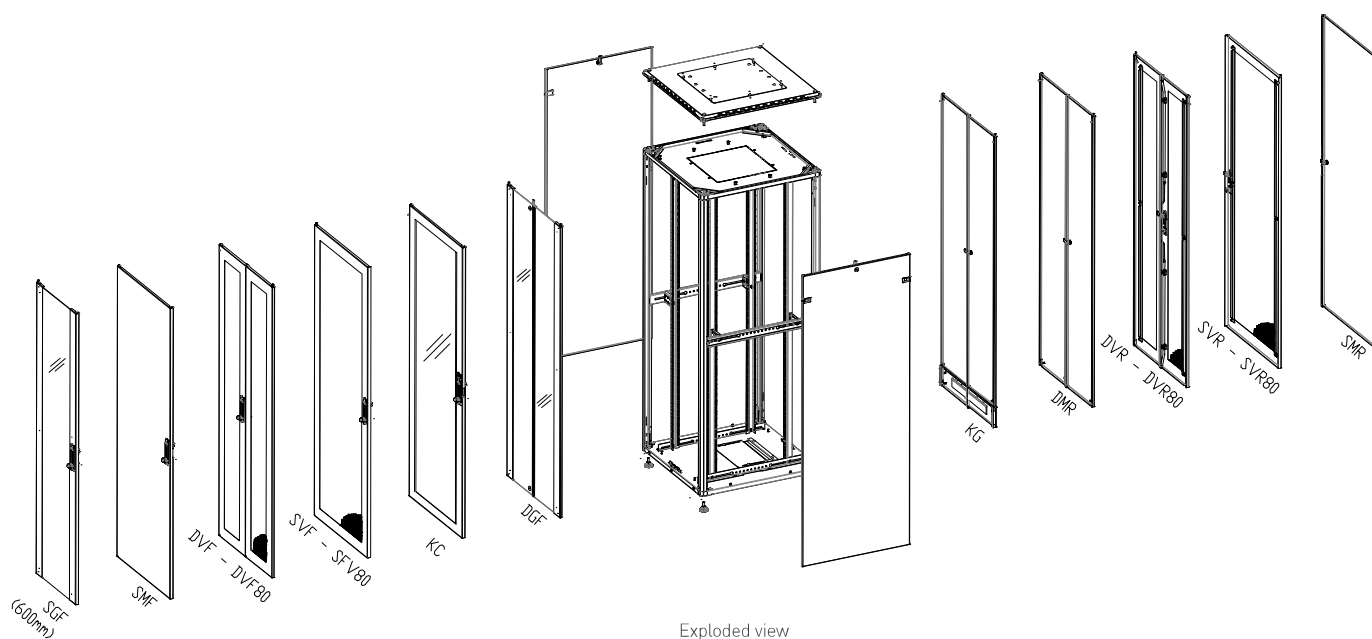
## EXTENSIVE DESIGN OPTIONS & ACCESSORIES\*

- Optional Top Cover with Brushed Cable Entry
- Brushed cable entries above and below backdoor  
( >26U)
- Plinths, Floor Fixings, Casters besides standard  
Leveling Feet
- Fans, Trays, Device Supports for higher  
performance

\*Pls. see page 12

# UniversalLine Cabinets Size Range

Part Number	Product definition (mm)	U size	Width: overall (mm)	Depth: overall (mm)	Depth: max mounting profile (mm)	Height: vertical mounting profile (mm)	Height: without levelling feet (mm)	Height: with levelling feet (mm)	Height: with casters (mm)
UNV26U7880	26U 780x800	26	780	800	690	1187	1312	1287	1370
UNV26U78100	26U 780x1000	26	780	1000	890	1187	1312	1287	1370
UNV32U7860	32U 780x600	32	780	600	490	1454	1579	1554	1637
UNV32U7880	32U 780x800	32	780	800	690	1454	1579	1554	1637
UNV36U7860	36U 780x600	36	780	600	490	1631	1796	1731	1814
UNV36U7880	36U 780x800	36	780	800	690	1631	1796	1731	1814
UNV39U7860	39U 780x600	39	780	600	490	1765	1890	1865	1948
UNV39U7880	39U 780x800	39	780	800	690	1765	1890	1865	1948
UNV42U7860	42U 780x600	42	780	600	490	1898	2023	1998	2081
UNV42U7880	42U 780x800	42	780	800	690	1898	2023	1998	2081
UNV42U78100	42U 780x1000	42	780	1000	890	1898	2023	1998	2081
UNV44U7860	44U 780x600	44	780	600	490	2010	2135	2110	2193
UNV44U7880	44U 780x800	44	780	800	690	2010	2135	2110	2193
UNV47U7860	47U 780x600	47	780	600	490	2120	2245	2220	2303
UNV47U7880	47U 780x800	47	780	800	690	2120	2245	2220	2303
UNV47U78100	47U 780x1000	47	780	1000	890	2120	2245	2220	2303



Exploded view

# UniversalLine Free Standing Cabinets

## UniversalLine Door Matrix

Door Code	Description	
<b>FRONT</b>		
SGF	Single Glass Front Door, single point locking	W: 600mm
DGF	Double Glass Front Door, two point barrel locking	W: 800mm
KC	Single, Full Frame Glass Front Door, single point locking	Optional
SVF	Single Vented Front Door, 63% perforated, single point locking	Optional
DVF	Double Vented Front Door, 63% perforated, three point locking	W: 800mm
SVF80	Single Vented Front Door, 80% perforated, single point locking	Optional
DVF80	Double Vented Front Door, 80% perforated, three point locking	Optional
SMF	Solid Metal Front Door	Optional
<b>REAR</b>		
SMR	Single Solid Metal Rear Door	Optional
DMR	Double Solid Metal Rear Door	Optional
SVR	Single Vented Rear Door, 63% perforated, single point locking	Optional
DVR	Double Vented Rear Door, 63% perforated, three point locking	Optional
SVR80	Single Vented Rear Door, 80% perforated, single point locking	Optional
DVR80	Double Vented Rear Door, 80% perforated, three point locking	Optional
KG	Solid Metal Rear Door(s) with cable entries on bottom	Standard

Marked are also Default Config.

Example : UNV22U6060\_01M50\_TR\_SVFSVR



## TESTS AND CERTIFICATIONS

### Environment

EN61587-1 / 4.2, IEC60068-2, IEC60068-2-2, IEC60068-2-30, IEC60917 and IEC60297

### Industrial Environment

EN61587-1 / 4.3, IEC60068-2-42, IEC60068-2-43 and IEC60068-2-49, IEC60068-2-1, IEC60917 and IEC60297

### Static mechanical structure load test

EN61587-1 / 5.2.1, IEC60917 and IEC60297

### Static mechanical structure stability

EN61587-1 / 5.2.2, IEC60917 and IEC60297

### Dynamic load, vibration and mechanical stroke

EN61587-1 / 5.3.1, EN61587-1 / 5.3.3, IEC60917, C60297, IEC62208

### Grounding continuity

EN61587-1 / 6.2, IEC60917 and IEC60297

### Fire and flame resistance

EN61587-1 / 6.3, IEC60917 and IEC60297

### Corrosion

ISO9227 and ASTM B 117-85

### IP protection degree

IP20 according to EN61587-1, IEC 60529

## PURCHASED PRODUCT CERTIFICATIONS

### Sheet steel

DIN EN 10130 – 99 Ereğli DC-01 6112, 7122, RoHS

### Electrostatic powder coating

ISO 9001, ISO 2178, ISO 2813, ISO 6272, ISO 8130-5, ISO 8130-3, RoHS

### Fan

ISO 9001, CE (89/336/EEC EMC, 73/23/EEC LVD), RoHS

### Glass

ISO 9001, EN 12150 – 1: 2000 tempered and secure

### Fixings

DIN 7985, DIN 965, DIN 7981, DIN 934, DIN 985, DIN 933, RoHS

### Casters

TS EN 12530, TS EN 12532, RoHS

### Lock

DIN 1743, DIN 53571, RoHS

## KEY FEATURES

Main profile (framework) has an aesthetic structure which increases mechanical resistance and consisting of 6 bends for each profile. In total; 24 folds provide framework stability. Tested to provide (x, y, z) axis resistance that meets EN 61587-1/5.2.1 and 5.2.2 and external impact resistance that meets EN 61587-1/5.3.3.

Bottom and upper case have a structure which increases resistance and strength of cabinet by fixed and profile interlocking design. Profiles are manufactured to interlock bottom and upper case with screws. Cable access at bottom case has a sliding cover plate that would block dust inlet.

A rubber edge on the cable access plate with sliding structure, allows fixing of cables into the cabinet without any damage.

At the bottom of the rear door, there is cable entry with micro joint. Rear door in standard configuration for W=600 is single opening door, for W=800 is double opening doors. Rear door(s) is removable and lockable. Side panels have a structure that can be opened and removed with slam latch and key and are lockable and removable. Special design punch form provides extra strength to side panel.

Front doors are a framed glass structure which is tempered, anti-static, secure and smoked glass (4 mm thickness) according to EN 12150-1:2000 standard. Front door in standard configuration has left and right metal frame structure with high density polyurethane adhesive and screw.

Removable and lockable with handle type locking unit. Pagoda style vented top panel with a dedicated space of ventilation fan module system allows easy installation of max. 4 fans.

19"(inch) mounting angles (2ea. in front and 2ea. in rear) are part of the cabinet interior configuration and adjustable in depth. While loaded, 19" profiles can be moved easily.

Baying is possible for side by side applications without side panels. Levelling feet are standard in shipping configuration.

The cabinet meets EN 61587-1, IEC 60917, IEC 60297 standards, RoHS compliancy, EAC and TSE certified.

Cabinets are manufactured in our factory which has ISO 9001: 2008 Quality Assurance System and our responsibility for environment with ISO 14001:2004 Environmental Management System.

### Custom number

With accessories: 853710100000 / 853710990019

Without accessories: 853810100000

### Shipping structure

Assembled / Flat pack

### Mounting type

Stand alone

### Load carrying capacity (kg)

600 kg.

### Certification on product

TSE, EAC, UL

### Surface finish

Electrostatic powder coated c/with surface treatment, 60 - 120 micron paint thickness and tested according to IEC 60068-2-1, 2-2, 2-30, 2-42, 2-43, 2-49, 2-11

## STANDARD PRODUCT

### Standard colour

Black: RAL 9005, Gray: RAL 7035

### IP protection standard

IP20

### FRONT DOOR

Shatterproof glass with left and right metal frame

#### Glass

4 mm thickness full-length smoked, shatterproof, tempered, secure

#### Front door construction

W=600 Single door opening

W=800 Double opening

#### Front door lock

Handle type, single point locking

#### Adhesive material

High density polyurethane DIN 53479, DIN 53505

### SIDE PANEL

Solid metal left and right, 0,8 mm left and right (2ea.)

Special design punch form provides extra strength to side panel.

#### Side panel construction

Lockable, removable c/with slam latches and lock

#### Side panel lock

Barrel type lock unit, single point + Slam latch (2ea)

### REAR DOOR

Solid metal, 1,2 mm

#### Rear door construction

W=600 Single opening, solid metal with micro joint cable entry at bottom.

W=800 Double opening, solid metal with micro joint cable entry at bottom.

#### Rear door lock

Barrel type lock unit, single point

### TOP COVER

Solid metal, 0,8 mm

#### Top cover construction

Pagoda type structure provides efficient air removal

### FRAMEWORK

#### Top base units

Solid metal, 1,5 mm

#### Bottom base units

Solid metal, 1,5 mm

#### Top and bottom base units construction

Completely modular structure

#### Uprights

Solid metal, 1,5 mm

#### Uprights construction

Tightly fixed into top and bottom base units 6 times folded

### INTERIOR PARTS

#### 19" mounting angles

Solid metal, 1,5 mm

3 times folded

"U" marking available 2 ea. at rear, 2 ea. at front

Pre-configured as 19"

#### C type support rails in depth

Solid metal, 1,5 mm

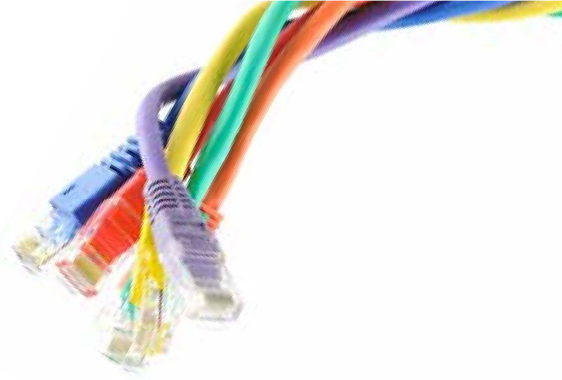
At top and bottom 2,5 mm, at middle 1,5 mm.

Top and bottom L shape, middle 4 times folded.

Pre-galvanized

# UniversalLine Free Standing Cabinets

Neat and clean cabling.



## HORIZONTAL, METAL CABLE ORGANISER

- Mountable at front or rear of shelf.
- Offers ability to use shelf and cable organiser within 1U.



## HORIZONTAL, PLASTIC FINGER TYPE CABLE ORGANISER

- Provides greater area for more professional cabling.
- Consists of 6 pieces of 3 fingered plastic hooks and a cover.
- Cover mounting plastics could also be used as hinge.
- Perfect harmony with vertical finger type cable organiser.
- Lightweight thanks to aluminium cover.



## VERTICAL, PLASTIC FINGER TYPE CABLE ORGANISER

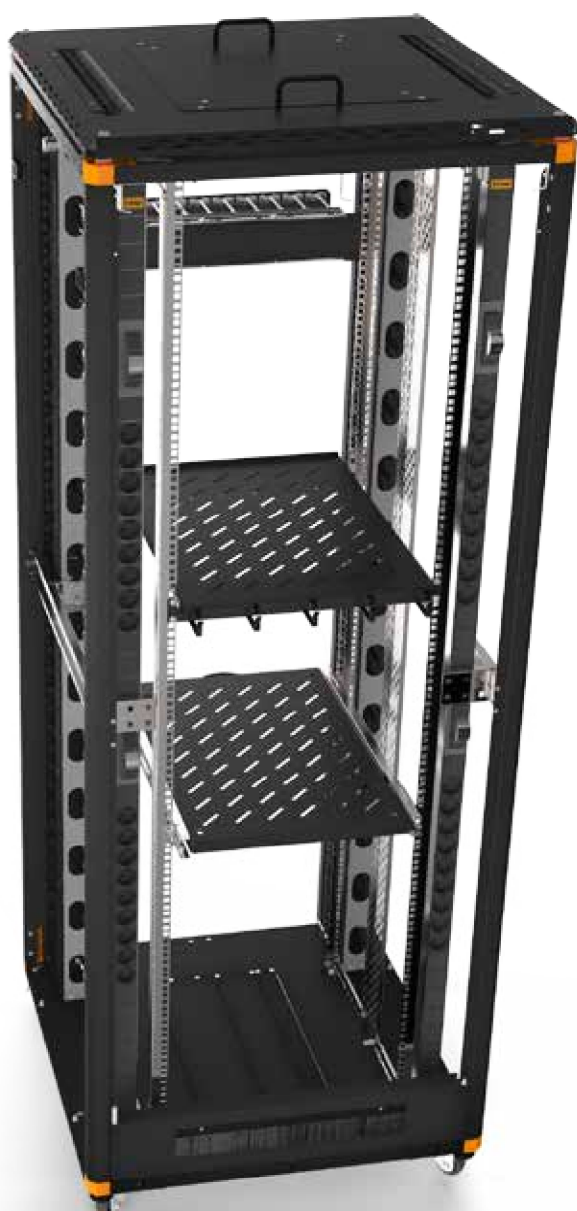
- Provides easy and secure cabling solution.
- High Quality Plastic Material
- Each vertical cable manager has 2 covers and finger type plastic hooks.
- Prevents cable breakages.



## DESIGN OPTIONS

### TOP COVER & FAN OPTIONS

- Brushed Cable Entries on the sides (W:800)
- Easy Mounted Fan Tray



### SMART COOLING OPTIONS

- Optional Easy-Top Mounted Fan tray provides easy maintenance without removing the cabinet content
- Efficient passive ventilation thanks to the vented, Pagoda style Top Cover



### BOTTOM CHASSIS OPTION

- Blanked panelled cable entries.  
Removable 1U, 2U and 3U 19" blanking panels at bottom chassis.